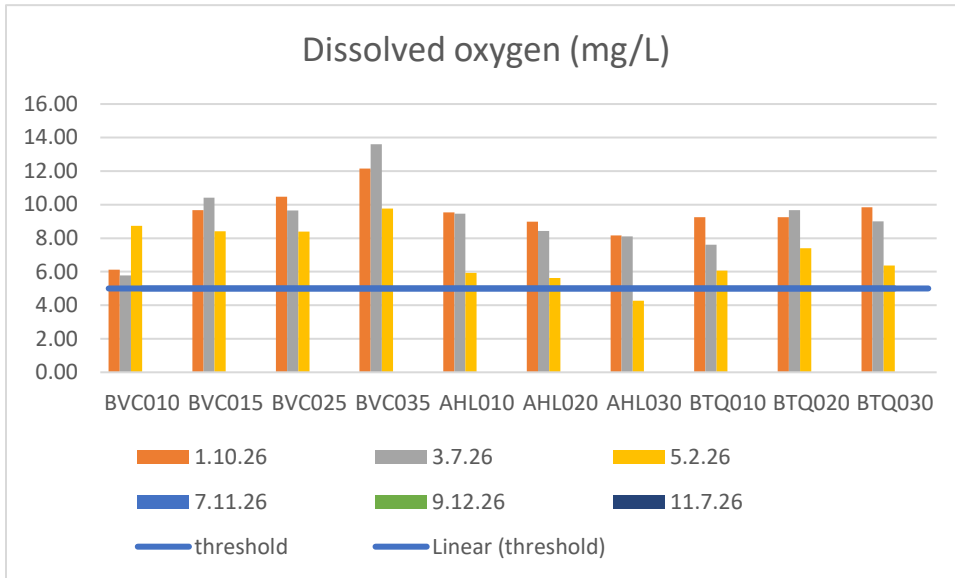
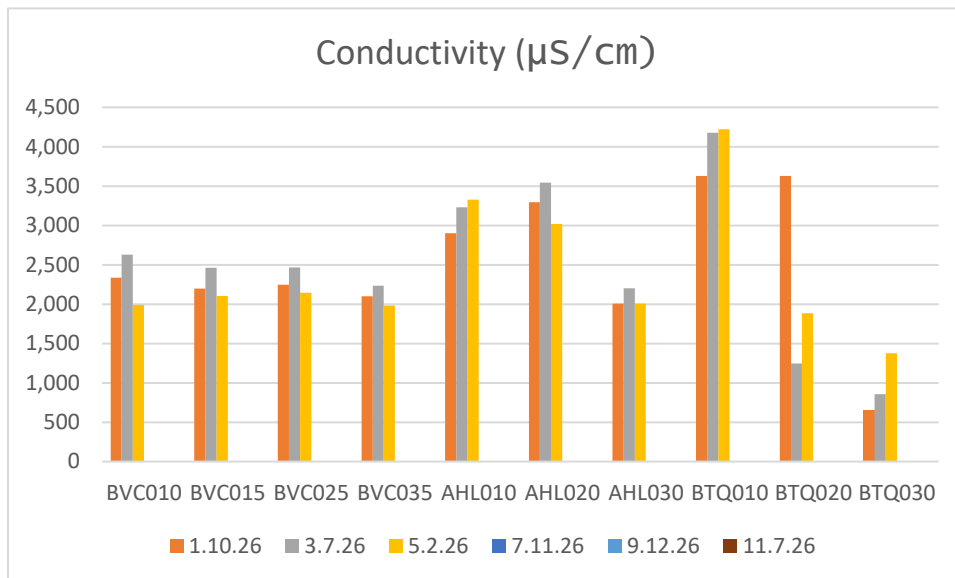


JANUARY – MAY 2026 WATER QUALITY DATA

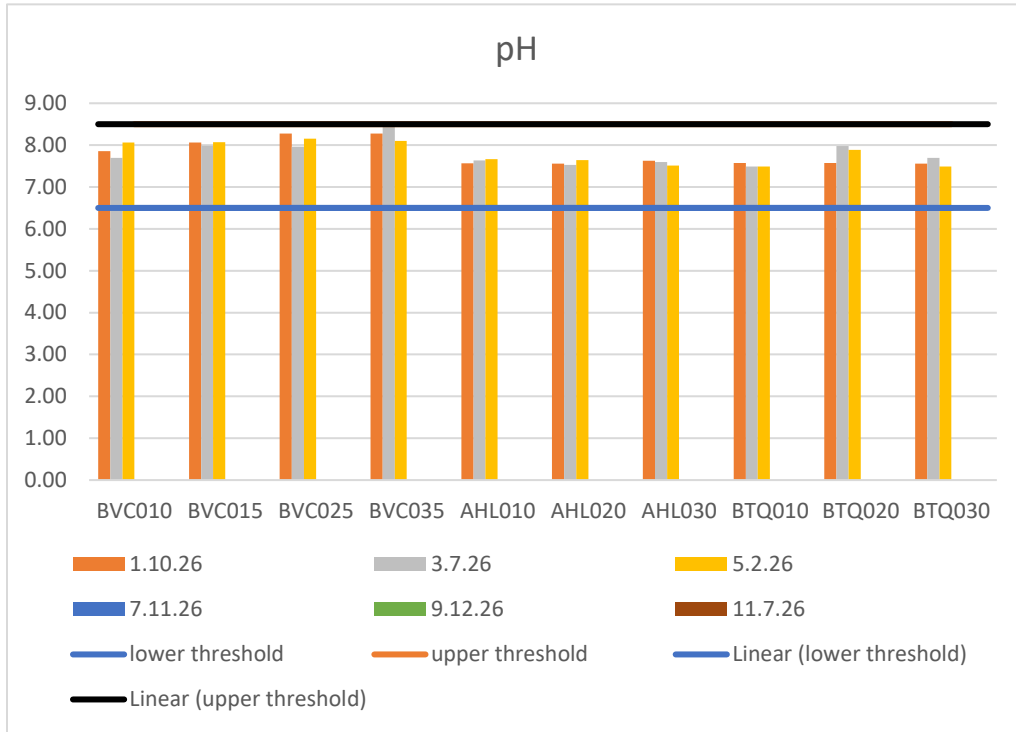
Dissolved oxygen



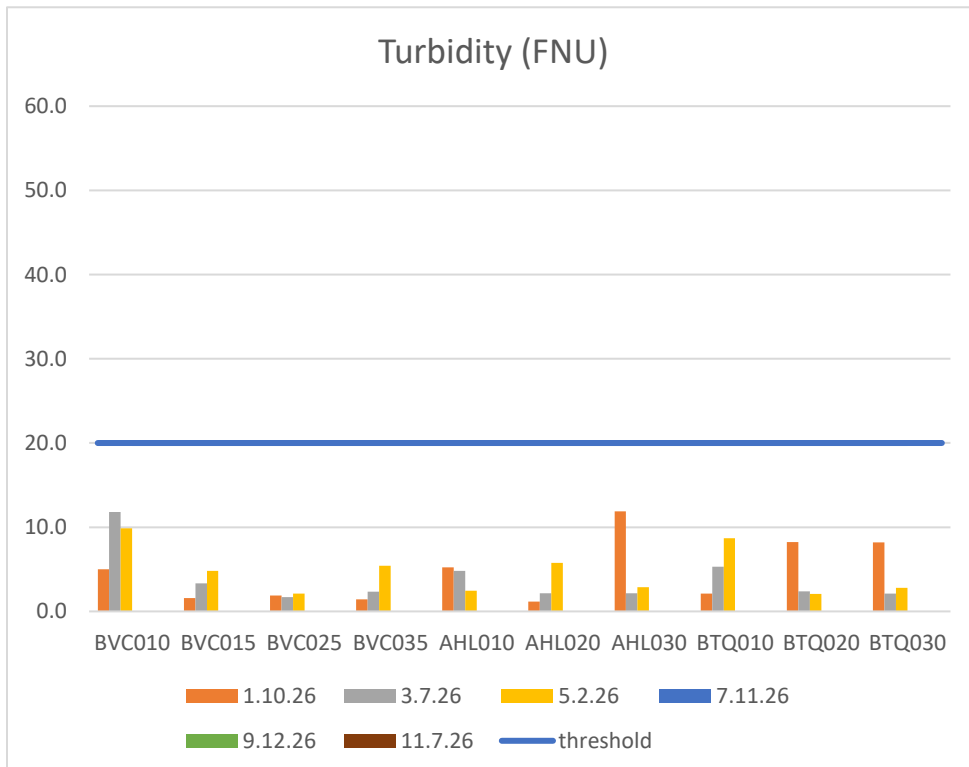
Conductivity



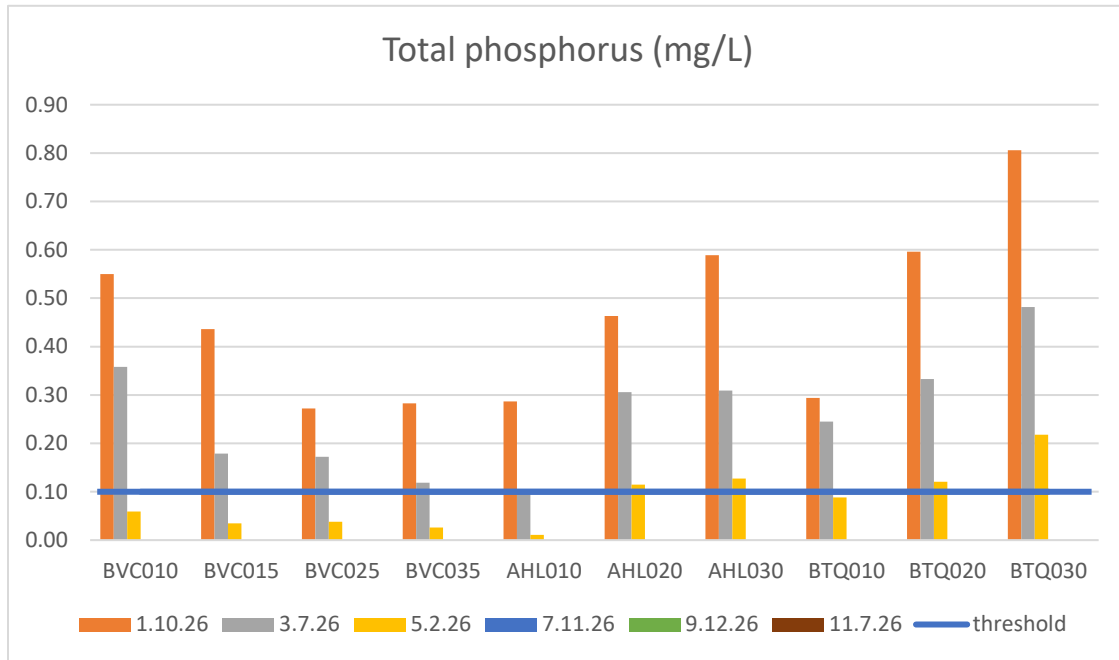
pH



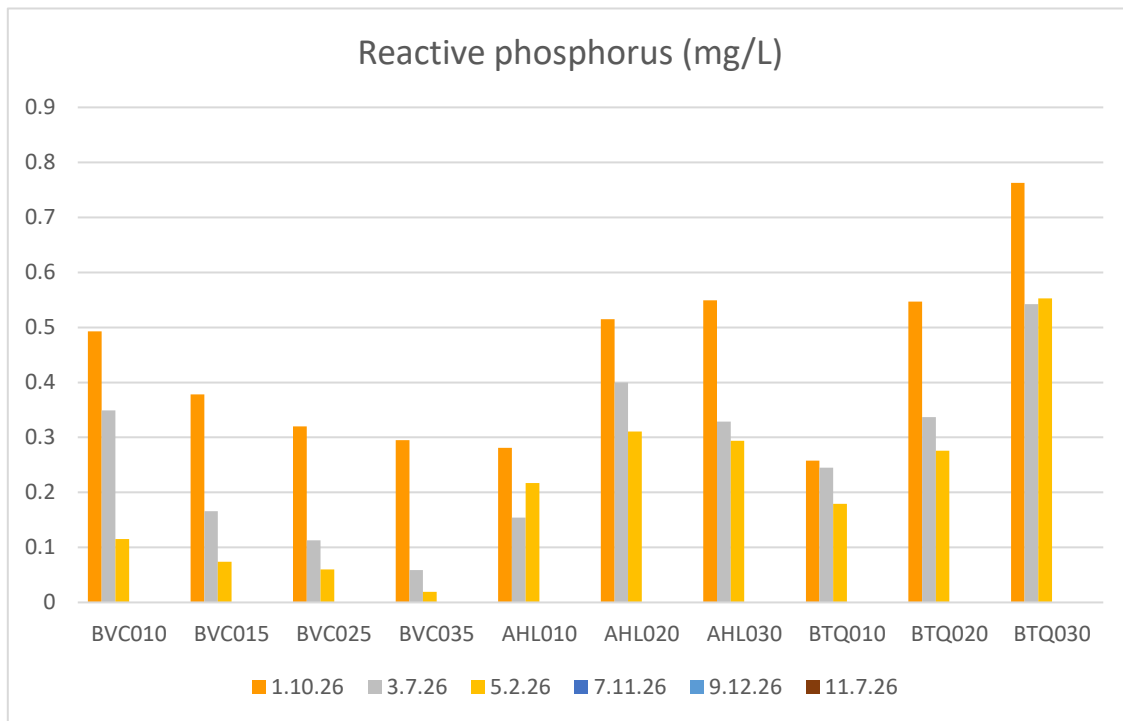
Turbidity



Total phosphorus

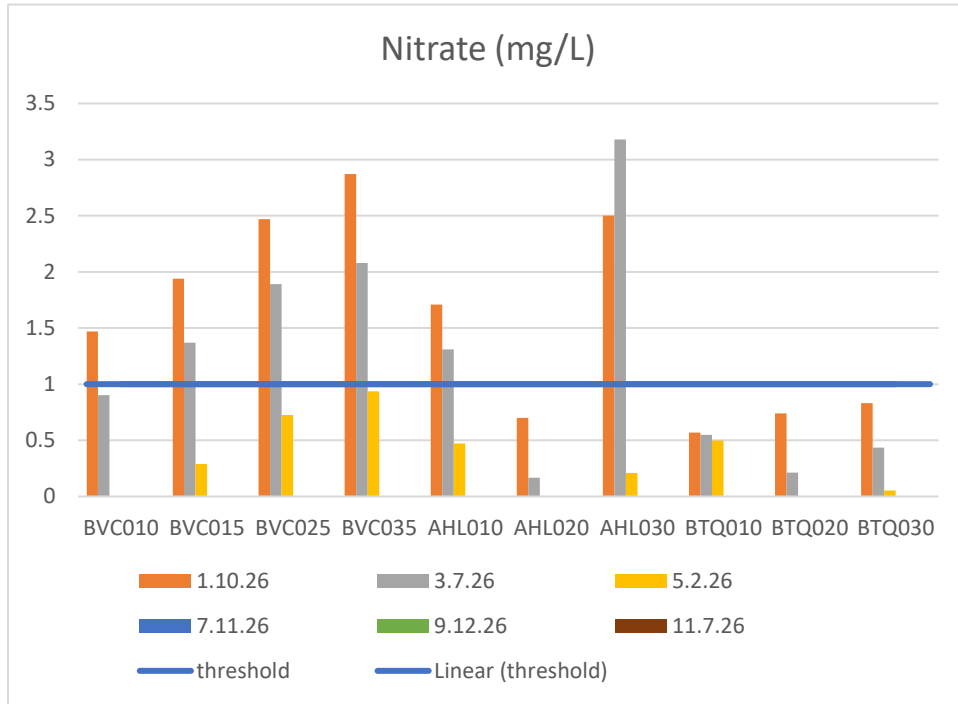


Reactive phosphorus

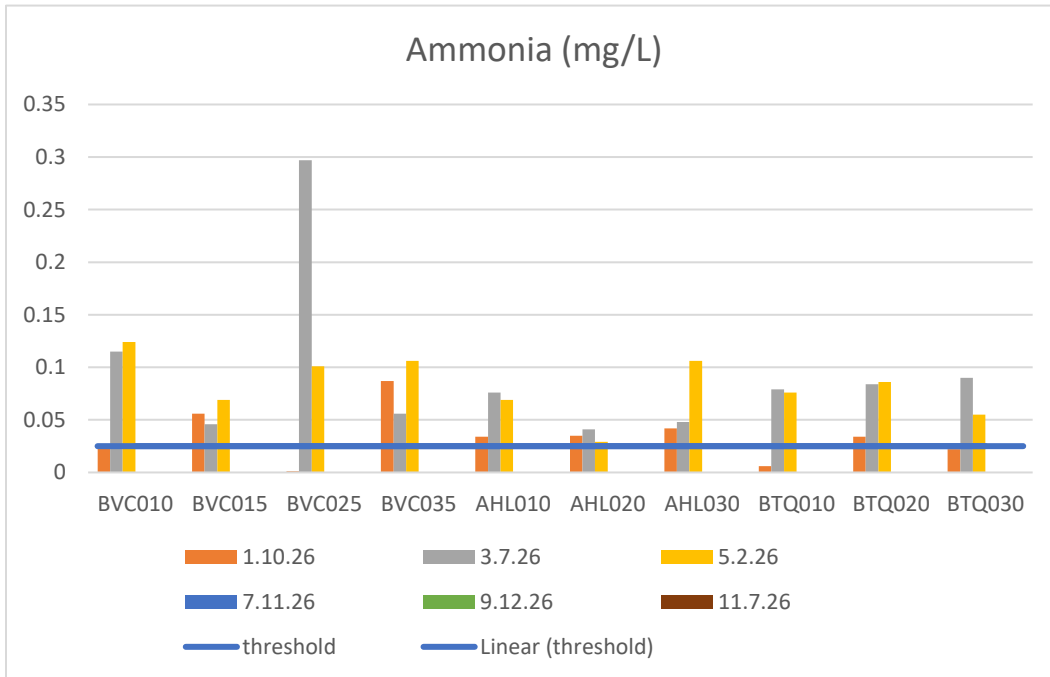


The total phosphorus should be greater than the reactive but for May many of the reactive phosphorus readings were greater than the total for some unknown reason.

Nitrate



Ammonia



E. coli

